



JOHNS HOPKINS
UNIVERSITY

Sustainability Leadership Council

ANNUAL REPORT 2020-2021

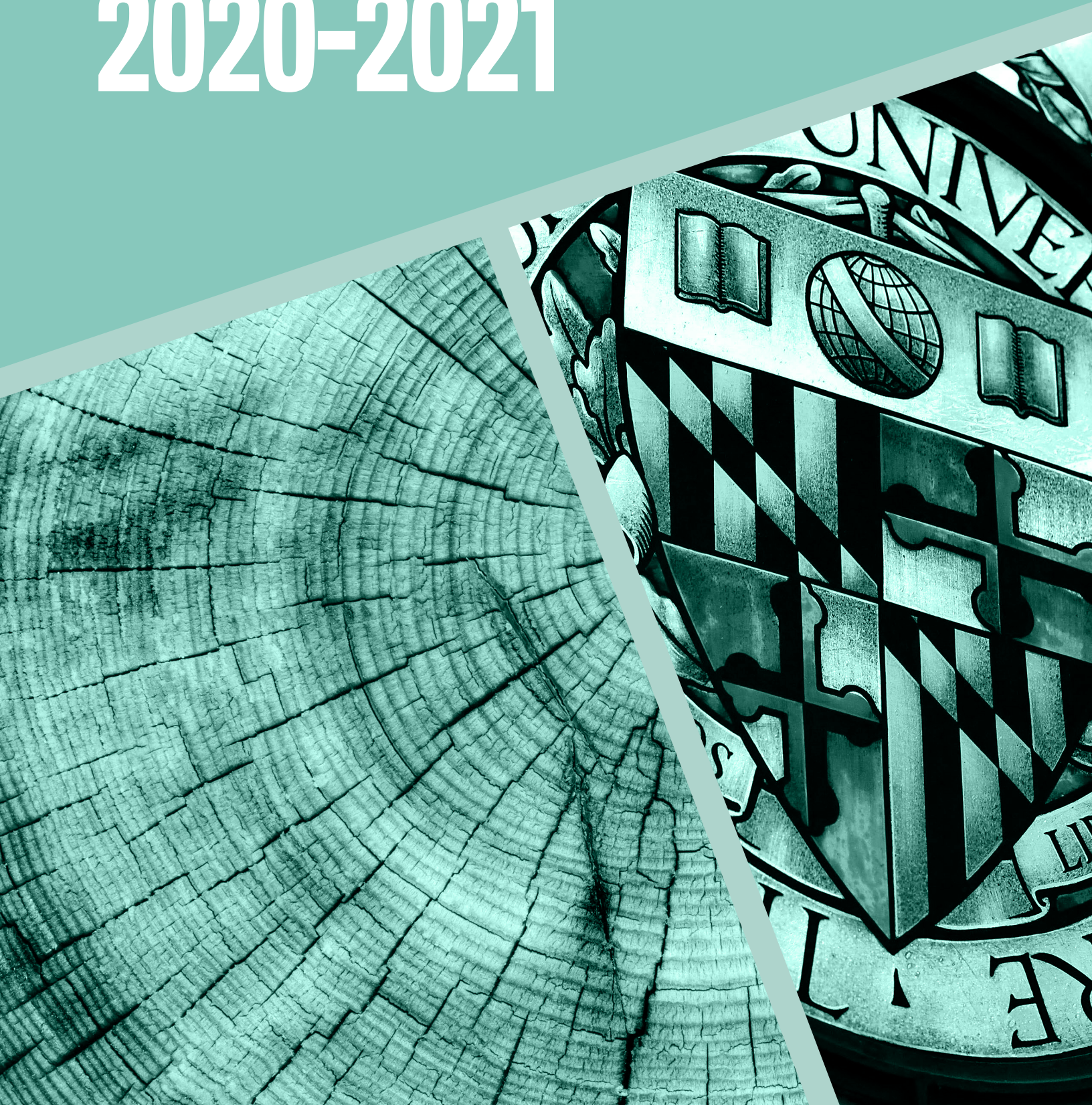


TABLE OF CONTENTS

*1
A Letter from the Provost*

*3
Reflections from Sustainability
Leadership Council Co-Chairs*

*4
One University Representation*

*6
Committee Highlights*

*15
Environmental Justice*

*20
Looking Ahead*

A MESSAGE FROM THE PROVOST

Dear Sustainability Partners,

Once again, I am pleased to share with you the annual report from the Johns Hopkins Sustainability Leadership Council. Though the 2020-2021 year will be characterized globally by the COVID-19 pandemic, it is critical that we take the opportunity to recognize and celebrate the work that has continued despite the incredible challenges we faced as individuals and a community. The strength and resilience of our community has illustrated to both President Daniels and me the unparalleled commitment of JHU to innovation, education, and—most importantly—one another.

It should come as no surprise, then, that university-wide, students, faculty, alumni, and staff have committed to strengthening JHU's reputation as a leader in environmental sustainability. For what better way is there to protect the future of our communities, their talents, and their potential than to ensure a safe, healthy, and sustained environment in which to live?

The Sustainability Leadership Council's work to expand education and behavior change in key areas, from Environmental Justice to greening labs, has coincided with the launch of a Sustainability Plan process beginning this academic year, which will require us to grapple with challenging questions regarding the university's role in sustainability stewardship both locally and globally. Throughout this process, we will look to the Council and other members of our community to help us use the lessons learned from the past year and a half to define an ambitious and inclusive planning process that leverages the unique strengths of the Johns Hopkins community.

As life slowly begins to resemble some semblance of a pre-COVID world, I challenge this group to think critically on what a new "normal" can be. We are poised at a moment for substantive change, and the Sustainability Leadership Council and its partners have demonstrated their ability to forge ahead with passion and resolve in pursuit of a healthier, more equitable future. I look forward to the coming year and am eager to see all we will accomplish.



Sunil Kumar

Provost of Johns Hopkins University



**FOR WHAT BETTER WAY
IS THERE TO PROTECT
THE FUTURE OF OUR
COMMUNITIES, THEIR
TALENTS, AND THEIR
POTENTIAL THAN
TO ENSURE A SAFE,
HEALTHY, AND SUSTAINED
ENVIRONMENT IN WHICH
TO LIVE?**

— Sunil Kumar, Provost



REFLECTIONS FROM SUSTAINABILITY LEADERSHIP COUNCIL CO-CHAIRS

Dear Sustainability Partners,

As we prepare for a new academic year and reflect on the unprecedented challenges of the last, we are struck by how fortunate we are to work with such a resilient and determined group of faculty, staff, students, and alumni.

We are not the first to recognize the many parallels between the uncertainty of our current lives and the disruptive forces of climate change. Not only have our cycles of study, work, and life been upended, but natural cycles have been challenged as well—extreme temperatures, intense weather events, and unprecedented natural disasters characterize all 4 seasons and serve as constant reminders of the reality and urgency of climate change. As the Intergovernmental Panel on Climate Change (IPCC) reports, we are witness to record-setting CO2 levels that have directly impacted the way we live—rapidly intensifying weather patterns across the globe.¹

Anxiety during a time of such unknowns is expected, and retreat in the name of self-preservation is understandable. This makes it all the more remarkable that the Sustainability Leadership Council (SLC) and our many university partners have held fast in our commitment to embedding sustainability as a core pillar of JHU's identity. In the face of what may be the most intense combination of challenges some of us will ever see, this group met extreme adversity with extreme resilience.

Members of the Green Labs Working Group launched and expanded a Green Labs Certification pilot initiative that now reaches 18 labs; a collection of faculty members from the Academic and Research Committees sits on the Leadership Council of the newly established Ralph O'Connor Sustainable Energy Institute (ROSEI); and an Environmental Justice Working Group was established to integrate justice, equity, diversity, inclusion, and belonging into the collective work of the SLC. Additional efforts continue to gain ground across the SLC's 4 committees and 13 working groups, and we are thrilled to share and celebrate them with you in this report.

The past year has been unlike any other, marked by massive loss as well as incredible stories of individual and community resilience. We thank all of you who have contributed your time and expertise, and we look forward to another year of collective action and impact in working towards a more sustainable Johns Hopkins University.

With gratitude,

Peter Winch and Bob McLean

Sustainability Leadership Council Co-Chairs

1. <https://www.ipcc.ch/>

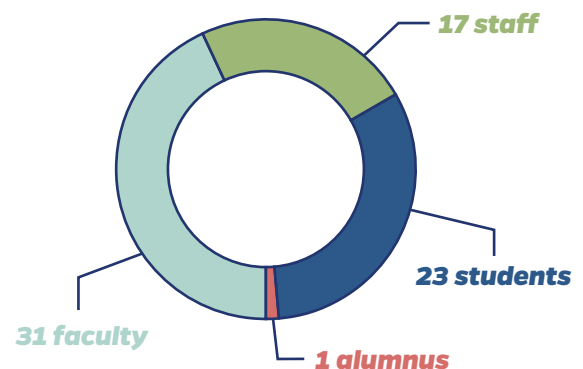
ONE UNIVERSITY REPRESENTATION



At the conclusion of its second year, the SLC continues to build campus intellectual leadership, adopt increasingly sustainable operations, and engage local communities through work informed by its core objective: to both deepen and broaden the activities of Johns Hopkins University related to environmental sustainability.

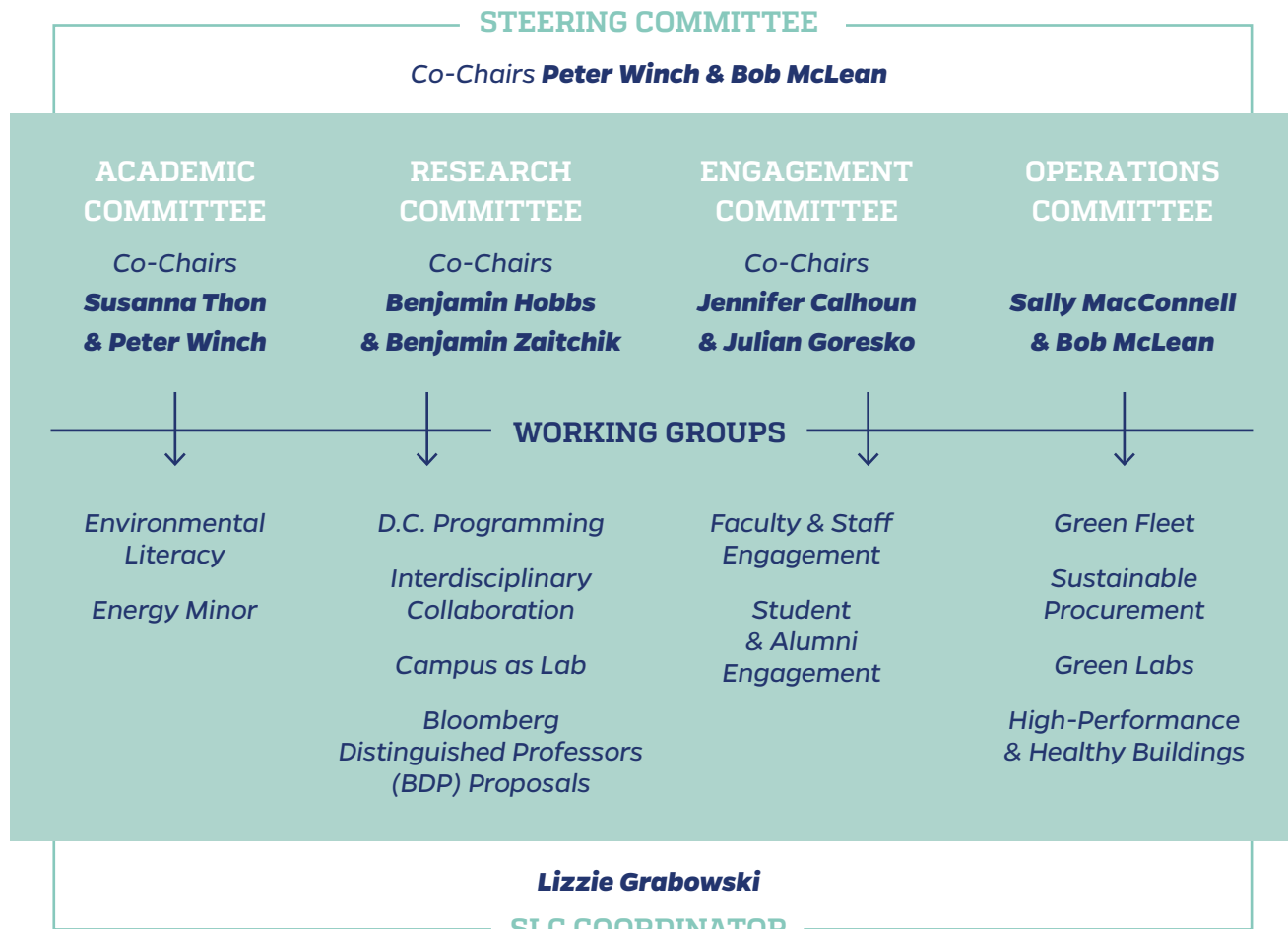
While faculty and staff commit to a 3-year term on the SLC, a new cohort of undergraduate and graduate students participates in an application process every spring semester to begin involvement the following fall. Together, this collection of faculty, staff, students, and alumni address 4 content areas—**Academic, Engagement, Operations, and Research**—to provide advice and recommendations to the Provost on policies, programs, and other initiatives that will establish JHU as a leader in environmental sustainability.

During the 2020-2021 academic year, the SLC was composed of the collective effort of:



These 72 members represent 8 schools, the Applied Physics Lab, and 10 divisions & offices across the university and were joined by an additional 17 working group members, a true embodiment of the One University vision.

SLC ORGANIZATION BREAKDOWN



SCHOOLS REPRESENTED

School of Advanced International Studies • School of Nursing • School of Education • School of Medicine • Bloomberg School of Public Health • Whiting School of Engineering • Krieger School of Arts and Sciences • Carey Business School

DIVISIONS AND OFFICES REPRESENTED

Applied Physics Lab • Division of Facilities and Real Estate • Homewood Student Affairs • Johns Hopkins Medical Institute • Office of Communications • Office of Procurement Services • Development and Alumni Relations • Human Resources • Office of Government and Community Affairs • Center for a Livable Future



COMMITTEE HIGHLIGHTS

The JHU Sustainability Leadership Council is composed of 4 committees—**Academic, Engagement, Research, and Operations**—each supported by a collection of working groups which seek to address and execute specific, thematic projects identified by SLC members as priorities of each committee.

ACADEMIC COMMITTEE

Mission: The Academic Committee seeks to build bridges and identify synergies between current and evolving academic offerings, facilitate collaboration between programs, and strengthen JHU's role in preparing graduates for leadership and careers in environmental sustainability.

Scope of Work: The efforts of the Academic Committee are supported by 2 working groups.

- An **Energy Minor Working Group** that developed an 18-credit joint WSE-KSAS Minor in Energy Engineering & Science, to be jointly administered by the Electrical and Computer Engineering Department and the Earth and Planetary Sciences Department and associated with ROSEI. Additionally, the group began initial planning for a future Minor program in Energy Policy to complement the program in Energy Engineering & Science.
- An **Environmental Literacy Working Group** to perform a benchmark analysis of peer institutions' efforts to establish environmental literacy among the student population and to ideate on programs and concepts that would incorporate environmental sustainability into existing course material and, consequently, the student experience both at the senior leadership and grassroots levels.

Members: The Academic Committee is composed of 4 students and 16 faculty members across the Bloomberg School of Public Health, School for Advanced International Studies, Krieger School of Arts and Sciences, and Whiting School of Engineering.



Susanna Thon

*Committee Co-Chair
& Associate Professor,
Department of Electrical and
Computer Engineering*



Peter Winch

*Committee Co-Chair and
Professor, Department of
International Health*

See all members in the Appendix, page 22.





5 members of the SLC Research and Academic Committees— Dr. Jonah Erlebacher, Dr. Dennice Gayme, Dr. Benjamin Hobbs, Dr. Susanna Thon, and Dr. Johannes Urpelainen – also serve as members of the ROSEI Leadership Council¹. ROSEI, which was established this past academic year, seeks to transform energy technology to combat climate change. These 5 faculty members harness their expertise in all areas from international energy policy, to grid efficiencies, to carbon capture technologies in order to support the Institute in its mission “to create and implement clean, renewable and sustainable energy technologies; educate future energy leaders; and support implementation, markets, and policies that promote an affordable and equitable green energy future for a more resilient world.”



**Jonah
Erlebacher**



**Dennice
Gayme**



**Benjamin
Hobbs**



**Susanna
Thon**



**Johannes
Urpelainen**

1. <https://energyinstitute.jhu.edu/>

RESEARCH COMMITTEE

Mission: The Research Committee promotes coordination and communication between different research groups working on sustainability, in addition to identifying opportunities for new funding and projects involving multiple university divisions that strengthen sustainability research.

Scope of Work: The efforts of the Research Committee are supported by 4 working groups.

- A **D.C. Programming Working Group** that is identifying modalities for delivering policy-relevant and policy-education sustainability programming at the forthcoming 555 Pennsylvania Avenue JHU location. Such programming will include events like the Columbia-JHU Future Power Markets Forum which hosted 8 successful, virtual sessions this year.
- An **Interdisciplinary Research Collaboration Working Group** that drafted descriptions of 9 research categories and 4 cross-cutting research themes representative of JHU faculty, staff, and student interests related to environmental sustainability. The group is also developing roles and responsibilities for a cohort of “Research Ambassadors” that will serve as a liaison for JHU affiliates, prospective students, and the broader public that wish to be connected with a faculty member working on a specific sustainability-focused research topic. These resources, along with current projects, will be integrated with the updated Sustainability web presence.
- A **Campus as Lab Working Group** that completed and collected stakeholder feedback on a formal Campus as Lab (CAL) proposal to utilize the physical campus as a testbed for innovation to support sustainability in education, research, and service missions, while providing students with applied experiences that can inform local, national, and global solutions.
- A **Bloomberg Distinguished Professors (BDP) Proposal Working Group** that is actively participating in 2 BDP proposals: an Energy Cluster and Climate Cluster, which have climate mitigation and adaption foci respectively. Additionally, the working group is continuing to support leadership in the establishment of ROSEI through participation in the Institute Leadership Council, in which members of the SLC’s research and academic committees hold the majority of seats.



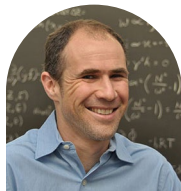
Committee Members & Working Group

Contributors: 7 students, 13 faculty, and 1 staff across Carey Business School, Bloomberg School of Public Health, Krieger School of Arts and Sciences, School for Advanced International Studies, School of Medicine, Whiting School of Engineering, and Division of Facilities & Real Estate.



Benjamin Hobbs

Committee Co-Chair and Professor, Department of Environmental Health and Engineering



Benjamin Zaitchik

Committee Co-Chair and Associate Professor, Morton K. Blaustein Department of Earth & Planetary Sciences

See all members in the Appendix, page 22.



Members of the Campus as Lab (CAL) working group, JHSPH graduate students Alexa Bellows, Elsie Moore, and Emma

Moynihan have partnered with faculty and staff over the past academic year to draft and gain university leadership support for a JHU CAL program proposal. The CAL program plans to use JHU's physical campuses as testbeds for innovative solutions to environmental sustainability challenges. The program would support sustainability in education, research, and service missions, while providing students with applied experiences that can inform local, national, and global solutions.



Alexa Bellows



Elsie Moore



Emma Moynihan

ENGAGEMENT COMMITTEE

Mission: The Engagement Committee works to identify programs and strategies that foster sustainable behavior change among individuals at Johns Hopkins University, enhances sustainability literacy and awareness, and strengthen communications solutions to improve information sharing.



Scope of Work: The efforts of the Engagement Committee are supported by 2 working groups.

- **Staff & Faculty Engagement Working Group** that is developing an executive engagement strategy for senior university leaders to empower distributed accountability for sustainability across university schools and divisions.
- **Student & Alumni Engagement Working Group** that executed an engagement-based initiative for all student groups that wished

to adopt sustainable practices as outlined in the [Sustainable Living Guide](#). The group also planned and produced a collection of Environmental Justice focused events in alignment with the SLC's overarching theme for the academic year and continues working to establish stronger and more useful avenues of alumni communication for updates and sharing sustainability-focused information, projects, and events.

Committee Members & Working Group

Contributors: The Engagement Committee is composed of 12 students, 2 faculty, 7 staff, and 1 alumnus across the Bloomberg School of Public Health, Krieger School of Arts and Sciences, School of Education, School of Medicine, School of Nursing, Division of Development and Alumni Relations, Office of Government and Community Affairs, Office of Human Resources, Division of Homewood Student Affairs, and Division of Facilities & Real Estate.



Jennifer Calhoun

Committee Co-Chair and Senior Advisor to the Vice Provost for Student Affairs



Julian Goresko

Committee Co-Chair and Director, Office of Sustainability

See all members in the Appendix, page 22.



Student engagement is an invaluable component of the SLC's work. An intimate understanding of JHU culture, community interests, and eagerness to learn characterize JHU students generally, so it is particularly exciting and gratifying when a student's commitment rises above the rest. The SLC is lucky enough to have 2 such "unicorns." Lanise Stevenson and Celia Lane are the graduate and undergraduate student representatives to the SLC Steering Committee respectively. Speaking on behalf of the interests of student representatives both across the SLC and the university, Celia and Lanise brought professional and transparent voices to SLC leadership. Additionally, their involvement in the Engagement Committee and Student & Alumni Engagement Working Group have been integral to the successful production of multiple engaging events on Environmental Justice that have initiated dialogue and catalyzed collective action to address justice, equity, diversity, and inclusion in relation to environmental sustainability.



**Lanise
Stevenson**



**Celia
Lane**

OPERATIONS COMMITTEE

Mission: The Operations Committee seeks to address opportunities for improving the daily operational and business practices of JHU across all areas of its environmental footprint, including energy, waste, food, water, transportation, wellness, procurement, and more.

Scope of Work: The efforts of the Operations Committee are supported by 4 working groups.

- **Green Fleet Working Group** that contributed to the RFP process for a new Homewood-Peabody-JHMI bus service, including an assessment of newer diesel or electric vehicle options and a carbon pricing analysis looking at the externalized social cost of carbon over the life of the contract. Additionally, the group is working toward developing a process to incorporate hybrid and/or electric behavioral checks into vehicle purchasing expectations; and is testing electric grounds equipment and non-titled vehicles.
- **Sustainable Procurement Working Group** that is designing and implementing strategic alignment with HopkinsLocal initiatives and integrating policy for Construction & Demolition (C&D) projects requiring 75% waste diversion from landfill or incineration as well as accurate tracking and reporting. The group is also finalizing a new JHU Vendor Guide to serve as a comprehensive resource for buyers across the enterprise to easily identify sustainable vendors and exploring strategies to increase sustainable procurement of high-volume products such as coffee, toner, and office paper.
- **Green Labs Working Group** that expanded an initial pilot of My Green Lab Certification from 2 to 18 labs, representing 4 schools and promoted the 2021 Freezer Challenge to engage labs across campus in efforts to promote sample accessibility, sample integrity, reduced costs, and energy efficiency.
- **High-Performance & Healthy Buildings Working Group** that is engaging an external consultant as part of the larger JHU Sustainability Plan Process to aid in developing High-Performance and Healthy Building Guidelines for JHU capital projects.

Committee Members & Working Group

Contributors: 12 students, 7 faculty, 23 staff, 1 alumnus across the Bloomberg School of Public Health, Krieger School of Arts and Sciences, School of Medicine, School of Education, Applied Physics Lab, Center for a Livable Future, Division of Homewood Student Affairs, Division of Facilities & Real Estate, Office of the President, Office of Procurement Services, Johns Hopkins Medical Institute, and University Health Services.



Sally MacConnell

Committee Co-Chair and Senior Vice President of Facilities, Johns Hopkins Medical Institution



Bob McLean

Committee Co-Chair and Vice President, Facilities & Real Estate

See all members in the Appendix, page 22.



The leaders of the Green Labs Working Group—Ryan Weeks, Bena Zeng, and James Leatherman—have made tremendous progress in advancing sustainable and environmental lab practices at JHU. The working group aims to reduce energy use and waste and improve equipment efficiency in lab spaces, as well as recognize successful labs for their efforts. This year, the Green Labs Working Group piloted a Green Labs Certification process in 18 labs across the university system and promoted a Freezer Challenge that encourages “sample accessibility, sample integrity, reduced costs, and energy efficiency with respect to freezer operations.” In the coming year the working group will continue these initiatives and as well as expand outreach on green labs practices to the broader campus community.



**Bena
Zeng**



**Ryan
Weeks**



**James
Leatherman**



ENVIRONMENTAL JUSTICE

Environmental Justice is the fair treatment and meaningful involvement of all people regardless of race, color, national origin, or income, with respect to the development, implementation, and enforcement of environmental laws, regulations, and policies.

ENVIRONMENTAL JUSTICE WORKING GROUP

Mission: Additionally, and in alignment with the SLC's annual theme of Collective Action toward Environmental Justice (EJ), an EJ Working Group was established separately from the 4 committees and will serve to hold the SLC committees, working groups, and their members accountable for intentionally incorporating themes and practices into their project work.

Scope of Work: The efforts of the EJ Working Group include:

- Hosting 162 unique guests at the 2nd Annual SLC Symposium: Collective Action toward EJ.
- Defining actionable takeaways from EJ events throughout the year including an EJ in Baltimore City panel discussion and guest speaker series held during the fall semester.
- Responding to the Provost's request for a formal program proposal that will outline involvement across multiple action areas including service learning and community level projects, information sharing, research, and policy.
- Providing feedback on the Roadmap for Diversity and Inclusion that identifies opportunities at the intersection of social and EJ.



Committee Members & Working Group

Contributors: 5 students, 5 faculty, and 2 staff across the Bloomberg School of Public Health, Krieger School of Arts and Sciences, School of Education, Division of Facilities and Real Estate, Office of Sustainability, and Whiting School of Engineering.

See all members in the Appendix, page 22.

COLLECTIVE ACTION TOWARD ENVIRONMENTAL JUSTICE

In response to the national discourse on systematic and systemic racism that followed the murders of Amaud Arbury, Breonna Taylor, George Floyd, and countless other BIPOC individuals, the Sustainability Leadership Council looked inward to examine how its own work could be leveraged to promote justice, equity, diversity, and inclusion at JHU and in within the Greater Baltimore community.

On September 25th, 2020 the SLC formally announced its commitment to EJ at the SLC Meeting of the Whole and shared the inaugural annual council theme of “Collective Action toward Environmental Justice.”

Environmental Justice, as defined by the EPA, is:

The fair treatment and meaningful involvement of all people regardless of race, color, national origin, or income, with respect to the development, implementation, and enforcement of environmental laws, regulations, and policies. This goal will be achieved when everyone enjoys (1) the same degree of protection from environmental and health hazards, and (2) Equal access to the decision-making process to have a healthy environment in which to live, learn, and work.¹

And though the work of the SLC to address EJ is just beginning, this academic year provided a strong start through:

- Planning and producing a fall speaker series in EJ which hosted Brother Eric Jackson, Servant Director of the Black Yield Institute, and Ingrid Waldron, author and producer of “There’s Something in the Water.”
- Hosting an EJ in Baltimore City Panel discussion that welcomed representatives from community organizations and local government for a discussion of embodied EJ in Baltimore City presently and historically.
- Welcoming 162 unique guests at the 2nd Annual SLC. The event featured a keynote address delivered by Dr. Carolyn Finney, author of “Black Faces, White Spaces,” featured an update on the JHU Sustainability Plan from partners at Skidmore, Owings, & Merrill, and a spotlight of staff, faculty, and students working on topics of EJ across the university.
- Chartering and standing up an EJ working group that exists separate from the 4 Committees and will serve to hold the SLC Committees, working groups, and their members accountable for intentionally incorporating themes on EJ into their work.

1. <https://www.epa.gov/environmentaljustice>



Carolyn Finney, author of *Black Faces, White Spaces: Reimagining the Relationship of African Americans to the Great Outdoors*, delivered the keynote address at the SLC's Second Annual Symposium on April 9, 2021. Carolyn Finney works to increase cultural competency in historically homogenous

environmental organizations, institutions, and activism. After a 5-year backpacking trip through Africa and Asia changed her outlook on life, she went back to school to complete a B.A., M.A., and PhD. In years since, she has worked to educate the public on varied topics related to increasing diversity in environmentalism and opening the traditionally white subject area to the rest of the world. Her keynote address focused on these ideas, and at one point she questioned: **"Who has been erased in the larger narrative about this country, as it relates to the environment?"** Her emphasis on our relationships to each other, as human beings, broadens the conversation outside of the traditional humans versus non-human approach to nature. Her talk was insightful, sharp, and thought-provoking and among the audience she inspired a sense of readiness, willingness, and necessity to make change. As Finney emphasized, **"The power of this moment is: we can actually do something different."**



**Carolyn Finney
and her book**





**WHO HAS BEEN
ERASED IN
THE LARGER
NARRATIVE ABOUT
THIS COUNTRY, AS
IT RELATES TO THE
ENVIRONMENT?**

— *Carolyn Finney*



LOOKING AHEAD

Faced with significant adversity over the past year and a half, a loss of momentum would have been understandable, expected even. However, the resilience of the SLC's faculty, staff, students, and alumni representatives as well as our community partners to continue pushing forward on projects and initiatives—recognizing the time sensitivity and importance of our commitment to sustainability—was inspiring.

As we enter another year, one that we hope with cautious optimism may be a bit more predictable and less trying, we are energized to continue building on this strength. We look forward to continue questioning what we know, developing innovative solutions, and building teams and dialogue that will carry this work beyond this academic year and JHU's campuses.

Some anticipated activities of the SLC for the coming year include:

- Contribution to the re-design of the Hopkins Sustainability web presence to strategize, design, develop, and launch a new website to communicate and exchange information, and strengthen the university's global identity in environmental sustainability.
- Participation in the draft process of an updated University Sustainability Plan through contribution of subject area expertise and strategic vision for the next chapter of sustainability at JHU.
- Expansion of a Green Labs Certification process as well as engagement and outreach efforts to increase campus-wide knowledge of responsible lab management protocol for environmental sustainability, sample integrity, and safety.
- Promotion of sustainable procurement practices university-wide that recognize the environmental, health, and societal impacts of local procurement, sustainable purchasing, and the downstream effects of landfills and incineration.

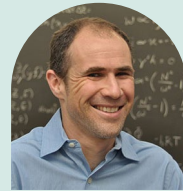




In addition to their activity on the SLC, Dr.'s Latshaw and Zaitchik will serve alongside Director of Sustainability, Julian Goresko, as faculty co-chairs to the recently launched JHU Sustainability Plan process. Dr. Megan Latshaw and Dr. Benjamin Zaitchik are faculty members in the Bloomberg School of Public Health, Department of Environmental Health and Engineering, and the Krieger School of Arts and Sciences, Department of Earth and Planetary Sciences, respectively. Dr. Latshaw serves on both the Academic Committee and Environmental Justice Working Group of the SLC. In her own research and pursuits, she aims to improve health by advocating for changes to our physical environment. Dr. Zaitchik is co-chair of the Research Committee, which promotes coordination between different areas of and identifies opportunities to strengthen sustainability research at JHU. He has a background in policymaking and teaches courses on the intersection of public policy and climate change mitigation.



**Megan
Latshaw**



**Benjamin
Zaitchik**

APPENDIX

We are grateful for the commitment and resilience of all of the SLC members and working group contributors listed below as well as our partners in sustainability across the university.

Academic Committee

- Amberly Bark | Graduate Student, Advanced Academic Programs
- Colin Bowen | Alumnus
- Thomas Burke | Professor, Department of Health Policy and Management
- Stuart Chaitkin | Senior Associate, Department of Environmental Health and Engineering
- Meghan Davis | Assistant Professor, Department of Environmental Health and Engineering
- Jessica Fanzo | Bloomberg Distinguished Associate Professor, Berman Institute of Bioethics
- Rebecca Kelly | Associate Teaching Professor, Department of Earth and Planetary Sciences
- Jordan Kuiper | Assistant Scientist, Department of Environmental Health and Engineering
- Carl Latkin | Professor, Department of Health, Behavior, and Society
- Megan Latshaw | Assistant Scientist, Department of Environmental Health and Engineering
- Hannah Marker | Research Associate, Department of International Health
- Scot Miller | Assistant Professor, Department of Environmental Health and Engineering
- Anand Pandian | Associate Professor and Director of Undergraduate Studies, Department of Anthropology
- Genee Smith | Assistant Professor, Department of Environmental Health and Engineering
- Dorothy Thompson | Undergraduate Student, Department of Environmental Engineering
- Johannes Urpelainen | Director and Professor, Department of Earth & Planetary Sciences
- Darryn Waugh | Professor, Morton K. Blaustein Department of Earth & Planetary Sciences
- Honor Zetzer | Undergraduate Student, Department of Economics

Research Committee

- Alexandra Bellows | Graduate Student, Department of International Health
- Will Checkley | Associate Professor, School of Medicine
- Jonah Erlebacher | Department Chair and Professor, Department of Materials Science and Engineering
- Jessica Fanzo | Bloomberg Distinguished Associate Professor, Berman Institute of Bioethics
- Paul Ferraro | Bloomberg Distinguished Professor, Carey Business School and Whiting School of Engineering and Bloomberg School of Public Health
- Dennice Gayme | Associate Professor, Department of Mechanical Engineering
- Julian Goresko | Director, Office of Sustainability
- Sarah Jordaan | Assistant Professor, Department of Energy, Resources and Environment
- Tammo Lossau | Graduate Student, Department of Philosophy
- Hannah Marker | Research Associate, Department of International Health
- Ethan Martin | Administration, School of Medicine
- Elsie Moore | Graduate Student, Department of Environmental Health and Engineering
- Emma Moynihan | Graduate Student, Department of Environmental Health and Engineering

- Roni Neff | Associate Professor, Department of Environmental Health and Engineering
- Kellogg Schwab | Assistant Professor, Department of Environmental Health and Engineering
- Johannes Urpelainen | Director and Professor, Department of Earth & Planetary Sciences
- Darryn Waugh | Professor, Morton K. Blaustein Department of Earth & Planetary Sciences
- Peter Winch | Professor, Department of International Health

Engagement Committee

- Melanie Alfonzo | Undergraduate Student, Department of Biophysics
- Patti Anderson | Director of Wellness and Health Promotion, University Health Services
- Madison Bates | Undergraduate Student, Department of International Studies
- Brittany Claridge | Student Success Advisor, Office of Student Transitions & Family Engagement
- Anne Haskins | Associate Director, Regional Programs, Development and Alumni Relations
- Leana Houser | Solid Waste & Recycling Specialist, Custodial Services
- Ryan Kennedy | Assistant Professor, Bloomberg School of Public Health
- Celia Lane | Undergraduate Student, Department of International Studies
- Casey Levitt | Undergraduate Student, Department of Computer Science
- Jennifer Mielke | Director of Community Affairs, University Administration
- Emmett Novick | Undergraduate Student, Department of Environmental Science
- Amy Murphy | Organization Development & Effectiveness Manager, Talent Management
- Laís Santoro | Undergraduate Student, Department of Public Health
- Talia Shadrui | Undergraduate Student, Department of International Studies
- Lanise Stevenson | Graduate Student, School of Education
- Mackinley Taylor | Undergraduate Student, International Studies Department
- Dorothy Thompson | Undergraduate Student, Department of Environmental Engineering
- Ryan Weeks | Graduate Student, Department of Chemical Biology
- Leah Weston | Graduate Student, School of Medicine
- David Yaffe | Alumnus

Operations Committee

- Patti Anderson | Director of Wellness and Health Promotion, University Health Services
- William Badertscher | Risk Management Specialist, Bloomberg School of Public Health
- Mark Baumgartner | Associate Director of Plant Operations, Department of Facilities and Real Estate
- Roger Becks | Executive Director, Student Auxiliary Services
- Zach Bley | Assistant Director of Facilities IT & Finance, Johns Hopkins Health System
- Zachary Britt | Graduate Student, Carey School of Business
- Bianca Corpuz | Graduate Student, Department of Earth & Planetary Sciences
- Lisa Egan | Senior Design & Construction Project Manager, Department of Facilities & Real Estate
- Quintina Erby | Category Portfolio Group Director, Procurement
- Ross Fischer | Director of Asset Management, Facilities and Real Estate
- Dave Fisher | Director of Facilities Commissioning, Johns Hopkins Health System
- Julian Goresko | Director, Office of Sustainability
- Ginger Hanson | Assistant Professor, School of Nursing
- Leana Houser | Solid Waste & Recycling Specialist, Custodial Services

- Martin Kajic | Director of Facilities Management, Bloomberg School of Public Health
- Rob Klinedinst | Senior Architect, Department of Facilities & Real Estate
- James Leatherman | Laboratory Manager, School of Medicine
- Casey Levitt | Undergraduate Student; Department of Computer Science
- Gregory Moormann | Group Supervisor of Facilities Engineering and Project Management, Applied Physics Lab
- Darwin Ray | Emergency Planner, School of Public Health
- Eda Reed; Graduate Student | Department of Population, Family, and Reproductive Health Services
- Ana Rule | Assistant Professor, Department of Environmental Health and Engineering
- Karin Neufeld | Associate Professor, Department of Psychiatry and Behavioral Sciences
- Debbie Newlon | Category Portfolio Group Manager, Procurement
- Rachel Sangree | Senior Lecturer, Department of Civil Engineering
- Deborah Schwengel | Associate Professor, School of Medicine
- Raychel Santo | Senior Program Coordinator, Center for a Livable Future
- Laís Santoro | Undergraduate Student, Department of Public Health
- Kellogg Schwab | Professor, Department of Environmental Health and Engineering
- Talia Shadrouti | Krieger School of Arts and Sciences, Department of International Studies
- Rob Shearman | Transportation Manager, Department of Facilities & Real Estate
- Brian Smith | Chief Procurement Officer, Procurement
- Greg Smith | Director of Transportation Services, Department of Facilities & Real Estate
- Lanise Stevenson | Graduate Student, School of Education
- JJ Tie | Graduate Student, Department of Geography and Environmental Engineering
- Eugenia Volkova | Graduate Student, Department of Chemical and Biomolecular Engineering
- Destin Webb | Graduate Student, Department of Energy Policy & Climate
- Ryan Weeks | Graduate Student, Department of Chemical Biology
- Leah Weston | Graduate Student, School of Medicine
- David Yaffe | Alumnus
- Bena Zeng | Energy Engineer, Department of Facilities & Real Estate

Environmental Justice Working Group

- Bianca Corpuz | Graduate Student, Department of Earth & Planetary Sciences
- Lizzie Grabowski | Sustainability Leadership Council Coordinator, Office of Sustainability
- Chris Heaney | Associate Professor, Department of Environmental Health and Engineering
- Leana Houser | Solid Waste & Recycling Specialist, Custodial Services
- Celia Lane | Undergraduate Student, Department of International Studies
- Megan Latshaw | Assistant Scientist, Department of Environmental Health and Engineering
- Casey Levitt | Undergraduate Student, Department of Computer Science
- Hannah Marker | Research Associate, Department of International Health
- Nicole Labruto | Assistant Research Professor; Director, Program in Medicine, Science, and the Humanities
- Laís Santoro | Undergraduate Student, Department of Public Health
- Genee Smith | Assistant Professor, Department of Environmental Health and Engineering
- Lanise Stevenson | Graduate Student, School of Education
- Peter Winch | Professor, Department of International Health

***For more information, visit:
sustainability.jhu.edu/about/sustainability-leadership-council***



@jhusustainability



@JHUsustainability